

COST SUMMARY

Project:	HIDDEN FOR PRIVACY
Address:	HIDDEN FOR PRIVACY
Scope:	PLUMBING
Date:	-

Website: www.alfasquareestimationa.com
Email: info@alfasquareestimations.com
Contact +17-869-476685



CSI DIV.	DESCRIPTION	TOTAL TRADE COST	REMARKS		
DIV. 01	GENERAL REQUIREMENTS	\$ 20,000			
DIV. 22	PLUMBING	\$ 150,838			
	SUBTOTAL	\$ 170,838			
	OVERHEAD & PROFIT - 15%	\$ 25,626			
	TOTAL BID	\$ 196,464			
	EXCLUSIONS				
	ALL ITEMS NOT MENTIONED ABOVE ARE EXCLUDED				

Estimate of Materials and Cost of Construction

Project: **HIDDEN FOR PRIVACY**
 Address: **HIDDEN FOR PRIVACY**
 Scope: **PLUMBING**
 Date: -

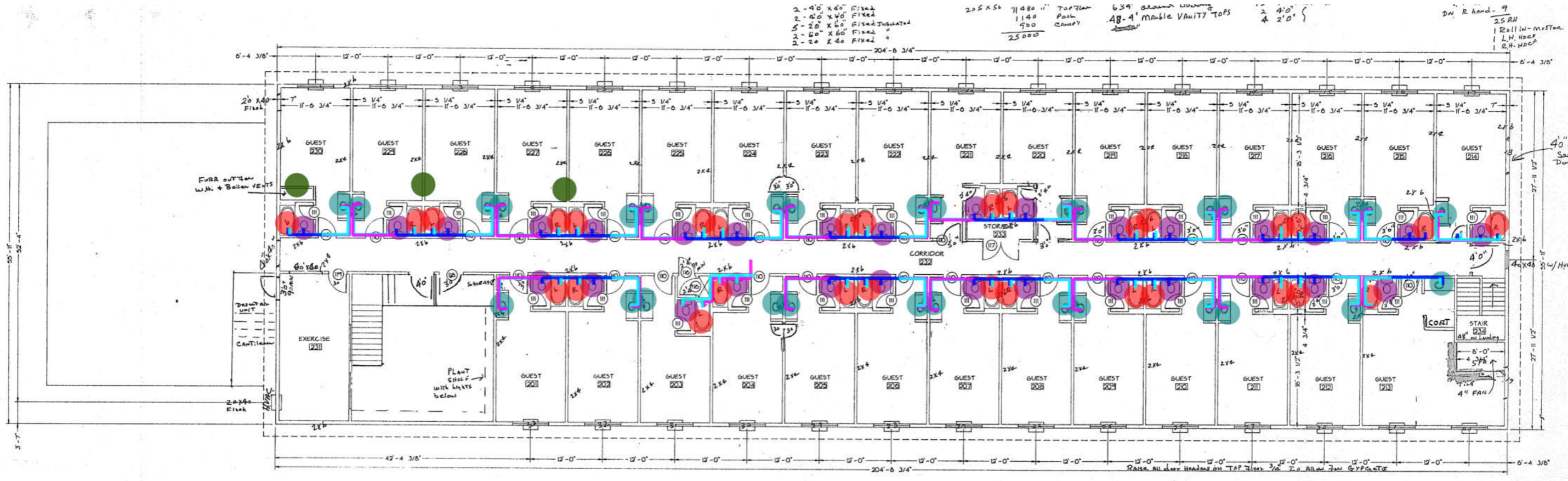


Website: www.alfasquareestimations.com
 Email: info@alfasquareestimations.com
 Contact: +17-869-476685

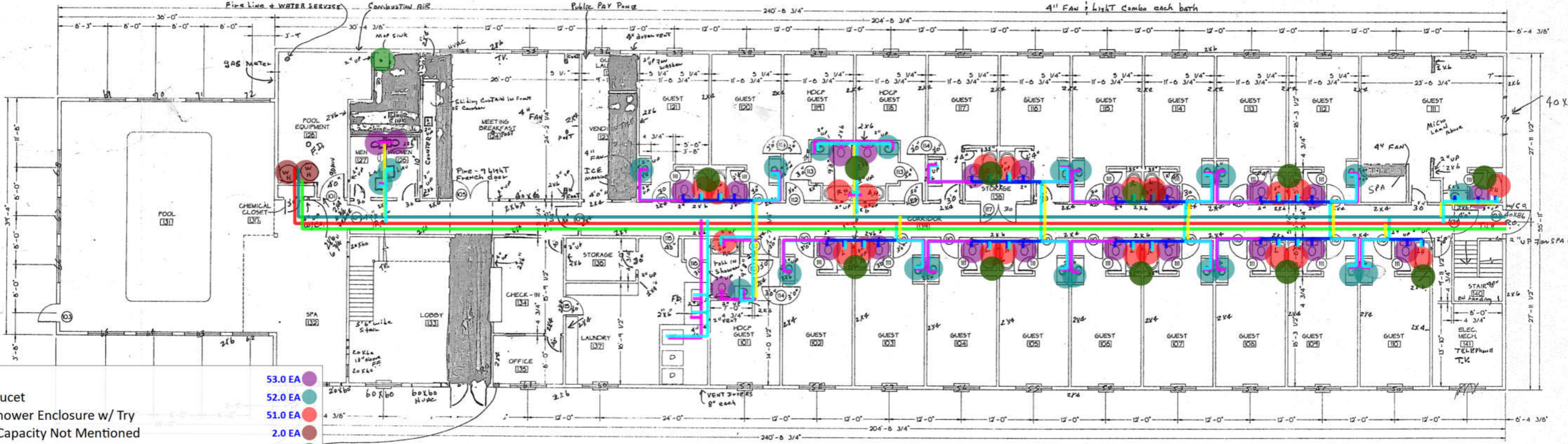
SR #	REF. SHEET	DETAIL SHEET	DESCRIPTION	QTY.	WASTAGE	QTY WITH WASTAGE	UNIT	UNIT MANHOURS	MANHOUR RATE	UNIT LABOR RATE	TOTAL LABOR COST	UNIT MATERIAL	TOTAL MATERIAL COST	UNIT ITEM COST	TOTAL COST
DIV. 01 GENERAL REQUIREMENTS															
1			Permits Documentation And Fees	1	0%	1	LS	0.00	\$ -	\$ -	\$ -	\$ -	\$ -	\$ -	
2			Hazardous Waste Or Disposal Work	1	0%	1	LS	0.00	\$ -	\$ -	\$ -	\$ -	\$ -	\$ -	
3			Owner Purchased, Contractor Installed Items	1	0%	1	LS	0.00	\$ -	\$ -	\$ -	\$ -	\$ -	\$ -	
3			Contractors Use Of New And Existing Facilities	1	0%	1	LS	0.00	\$ -	\$ -	\$ -	\$ -	\$ -	\$ -	
4			Correction Of Unsatisfactory Conditions	1	0%	1	LS	0.00	\$ -	\$ -	\$ -	\$ -	\$ -	\$ -	
4			Restoration Of Unit Damaged During Installation	1	0%	1	LS	0.00	\$ -	\$ -	\$ -	\$ -	\$ -	\$ -	
5			Replacement Of Units Which Cannot Be Restored	1	0%	1	LS	0.00	\$ -	\$ -	\$ -	\$ -	\$ -	\$ -	
5			Maintaining Existing Construction In Weather High Conditions	1	0%	1	LS	0.00	\$ -	\$ -	\$ -	\$ -	\$ -	\$ -	
6			Signage	1	0%	1	LS	0.00	\$ -	\$ -	\$ -	\$ -	\$ -	\$ -	
6			Supervisory Personnel	1	0%	1	LS	0.00	\$ -	\$ -	\$ -	\$ -	\$ -	\$ -	\$ 20,000.0
7			Temporary Services	1	0%	1	LS	0.00	\$ -	\$ -	\$ -	\$ -	\$ -	\$ -	
7			Water	1	0%	1	LS	0.00	\$ -	\$ -	\$ -	\$ -	\$ -	\$ -	
8			Lighting And Power	1	0%	1	LS	0.00	\$ -	\$ -	\$ -	\$ -	\$ -	\$ -	
8			Toilet Facilities	1	0%	1	LS	0.00	\$ -	\$ -	\$ -	\$ -	\$ -	\$ -	
9			Material Storage	1	0%	1	LS	0.00	\$ -	\$ -	\$ -	\$ -	\$ -	\$ -	
10			Contractor's Safety Program	1	0%	1	LS	0.00	\$ -	\$ -	\$ -	\$ -	\$ -	\$ -	
SUBTOTAL															\$ 20,000

DIV. 22 PLUMBING															
SANITARY PIPES															
Material: PVC SCH. 40															
11			2" Dia Sanitary Pipe	191	5%	200	LF	0.02	\$ 68.0	\$ 1.3	\$ 252.06	\$ 3.2	\$ 630.1	\$ 4	\$ 882.2
13			4" Dia Sanitary Pipe	208	5%	218	LF	0.03	\$ 68.0	\$ 1.9	\$ 414.12	\$ 4.8	\$ 1,035.3	\$ 7	\$ 1,449.4
14			6" Dia Sanitary Pipe	103	5%	108	LF	0.03	\$ 68.0	\$ 2.3	\$ 252.90	\$ 5.9	\$ 632.2	\$ 8	\$ 885.1
15			1-1/2" Dia Sanitary Waste Pipe	606	5%	636	LF	0.02	\$ 68.0	\$ 1.1	\$ 725.23	\$ 2.9	\$ 1,813.1	\$ 4	\$ 2,538.3
Risers															
16			2" Dia Sanitary Pipe Up - (10'-0" H)	320	5%	336	LF	0.02	\$ 68.0	\$ 1.3	\$ 423.36	\$ 3.2	\$ 1,058.4	\$ 4	\$ 1,481.8
17			3" Dia Sanitary Pipe Up - (8'-9" H)	140	5%	147	LF	0.02	\$ 68.0	\$ 1.6	\$ 241.08	\$ 4.1	\$ 602.7	\$ 6	\$ 843.8
18			4" Dia Sanitary Pipe Up - (3'-0" H)	87	5%	91	LF	0.03	\$ 68.0	\$ 1.9	\$ 173.57	\$ 4.8	\$ 433.9	\$ 7	\$ 607.5
VENT PIPES															
Material: PVC SCH. 40															
20			2-1/2" Dia Vent Pipe	218	5%	229	LF	0.02	\$ 68.0	\$ 1.1	\$ 243.81	\$ 2.7	\$ 609.5	\$ 4	\$ 853.3
Risers															
21			3" Dia Vent Pipe Up - (12'-0" H)	384	5%	403	LF	0.02	\$ 68.0	\$ 1.2	\$ 499.97	\$ 3.1	\$ 1,249.9	\$ 4	\$ 1,749.9
WATER PIPES															
Material: Copper Type K															
23			2" Dia Cold Water Pipe (Size Is Assumed)	208	5%	218	LF	0.03	\$ 68.0	\$ 1.7	\$ 370.94	\$ 4.3	\$ 927.4	\$ 6	\$ 1,298.3
24			2" Dia Hot Water Pipe (Size Is Assumed)	210	5%	220	LF	0.03	\$ 68.0	\$ 1.7	\$ 374.03	\$ 4.3	\$ 935.1	\$ 6	\$ 1,309.1
25			1-1/2" Dia Hot Water Return Pipe (Size Is Assumed)	207	5%	218	LF	0.02	\$ 68.0	\$ 1.5	\$ 317.81	\$ 3.7	\$ 794.5	\$ 5	\$ 1,112.3
26			1-1/4" Dia Cold Water Pipe	81	5%	85	LF	0.02	\$ 68.0	\$ 1.4	\$ 115.85	\$ 3.4	\$ 289.6	\$ 5	\$ 405.5
27			3/4" Dia Cold Water Pipe	375	5%	394	LF	0.02	\$ 68.0	\$ 1.1	\$ 417.23	\$ 2.7	\$ 1,043.1	\$ 4	\$ 1,460.3
28			1/2" Dia Cold Water Pipe	606	5%	637	LF	0.01	\$ 68.0	\$ 1.0	\$ 623.82	\$ 2.5	\$ 1,559.6	\$ 3	\$ 2,183.4
29			1/2" Dia Hot Water Pipe	1000	5%	1049	LF	0.01	\$ 68.0	\$ 1.0	\$ 1,028.49	\$ 2.5	\$ 2,571.2	\$ 3	\$ 3,599.7
30			1" Dia Cold Water Pipe Up	140	5%	147	LF	0.02	\$ 68.0	\$ 1.3	\$ 188.16	\$ 3.2	\$ 470.4	\$ 4	\$ 658.6
31			3/4" Dia Hot Water Pipe Up	140	5%	147	LF	0.02	\$ 68.0	\$ 1.1	\$ 155.82	\$ 2.7	\$ 389.6	\$ 4	\$ 545.4
VALVES															
32			2" Dia Gate Valve	1	0%	1	EA	0.38	\$ 68.0	\$ 26.0	\$ 26.00	\$ 65.0	\$ 65.0	\$ 91	\$ 91.0
33			T&P Relief Valve	1	0%	1	EA	0.28	\$ 68.0	\$ 19.2	\$ 19.20	\$ 48.0	\$ 48.0	\$ 67	\$ 67.2
34			Back Flow Preventer Valve	1	0%	1	EA	0.40	\$ 68.0	\$ 27.2	\$ 27.20	\$ 68.0	\$ 68.0	\$ 95	\$ 95.2
35			Shut Off Valve	4	0%	4	EA	0.36	\$ 68.0	\$ 24.8	\$ 99.20	\$ 62.0	\$ 248.0	\$ 87	\$ 347.2
36			1-1/4" Dia Ball Valve	28	0%	28	EA	0.38	\$ 68.0	\$ 25.6	\$ 716.80	\$ 64.0	\$ 1,792.0	\$ 90	\$ 2,508.8
FIXTURES															
37			(2'-6"x 5'-0") Shower Enclosure w/ Try	51	0%	51	EA	2.66	\$ 68.0	\$ 180.8	\$ 9,220.80	\$ 452.0	\$ 23,052.0	\$ 633	\$ 32,272.8
38			2" Dia Floor Drain	3	0%	3	EA	1.27	\$ 68.0	\$ 86.4	\$ 259.20	\$ 216.0	\$ 648.0	\$ 302	\$ 907.2
39			4" Dia Cleanout	2	0%	2	EA	0.97	\$ 68.0	\$ 66.0	\$ 132.00	\$ 165.0	\$ 330.0	\$ 231	\$ 462.0
40			4" Dia Floor Drain	2	0%	2	EA	1.44	\$ 68.0	\$ 98.0	\$ 196.00	\$ 245.0	\$ 490.0	\$ 343	\$ 686.0
41			House Bib	1	0%	1	EA	0.79	\$ 68.0	\$ 54.0	\$ 54.00	\$ 135.0	\$ 135.0	\$ 189	\$ 189.0
42			Lavatory W/ Faucet	52	0%	52	EA	3.09	\$ 68.0	\$ 210.0	\$ 10,920.00	\$ 525.0	\$ 27,300.0	\$ 735	\$ 38,220.0
43			MOP Sink	1	0%	1	EA	3.21	\$ 68.0	\$ 218.0	\$ 218.00	\$ 545.0	\$ 545.0	\$ 763	\$ 763.0
44			Water Closet	53	0%	53	EA	3.68	\$ 68.0	\$ 250.0	\$ 13,250.00	\$ 625.0	\$ 33,125.0	\$ 875	\$ 46,375.0
45			Water Meter	1	0%	1	EA	2.06	\$ 68.0	\$ 140.0	\$ 140.00	\$ 350.0	\$ 350.0	\$ 490	\$ 490.0
46			Water Heater, Capacity Not Mentioned	2	0%	2	EA	7.35	\$ 68.0	\$ 500.0	\$ 1,000.00	\$ 1,250.0	\$ 2,500.0	\$ 1,750	\$ 3,500.0
SUBTOTAL															\$ 150,838

														TOTAL MATERIAL COST	\$ 107,742
														TOTAL LABOR COST	\$ 43,097
														TOTAL COST	\$ 170,838
														OVERHEAD & PROFIT (15%)	\$ 25,626
														TOTAL BID	\$ 196,464



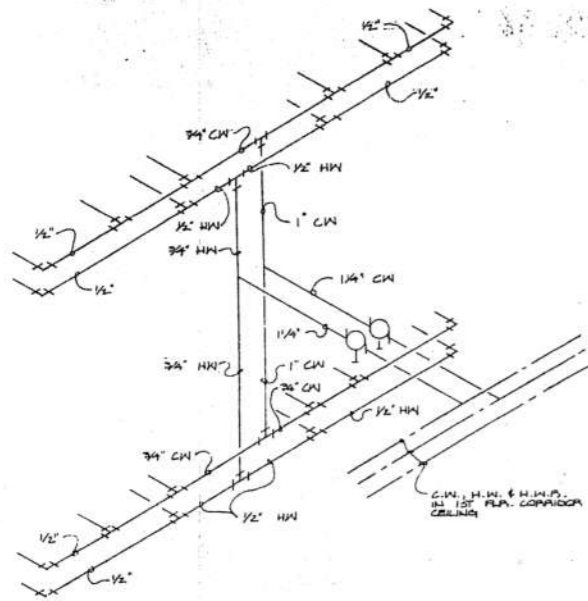
SECOND FLOOR PLAN
SCALE: 1/8"=1'-0"



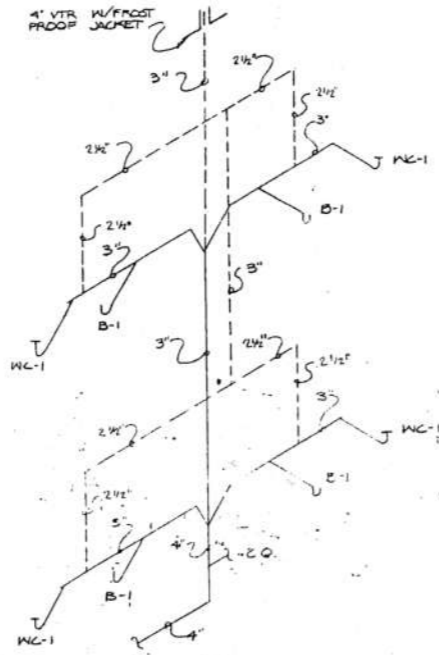
FIRST FLOOR PLAN
SCALE: 1/8"=1'-0"

- Water Closet
 - Lavatory W/ Faucet
 - (2'-6"x 5'-0") Shower Enclosure w/ Try
 - Water Heater, Capacity Not Mentioned
 - MOP Sink
 - 2" Dia Cold Water Pipe (Size Is Assumed)
 - 2" Dia Hot Water Pipe
 - 1-1/2" Dia Hot Water Return Ppe
 - 1-1/4" Dia Cold Water Pipe
 - 3/4" Dia Cold Water Pipe
 - 1/2" Dia Cold Water Pipe
 - 1/2" Dia Hot Water Pipe
 - 1" Dia Cold Water Pipe Up
 - 3/4" Dia Hot Water Pipe Up
- 53.0 EA
 - 52.0 EA
 - 51.0 EA
 - 2.0 EA
 - 1.0 EA
 - 207.8 FT
 - 209.5 FT
 - 207.3 FT
 - 81.1 FT
 - 374.9 FT
 - 606.2 FT
 - 999.5 FT
 - 14.0 EA
 - 14.0 EA

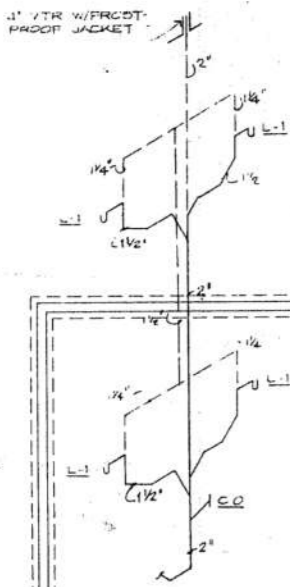
SHEET: 5 OF 8	JOB NO.: 9430	DATE: 10-21-94	Eugene H. Wright & Associates - Architects P.O. BOX 6152, LINCOLN, NEBRASKA 68506 (402)489-8808	51 UNIT MOTEL MONTROSE, COLORADO
FIRST AND SECOND FLOOR PLANS				



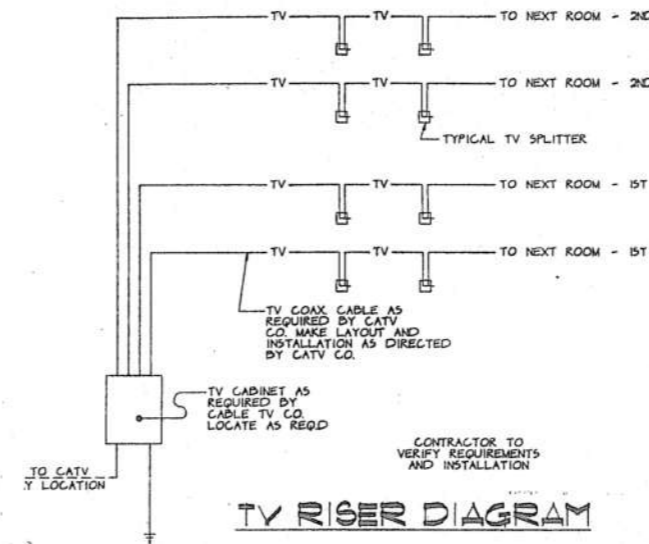
TYPICAL 4 UNIT WATER RISER
SCALE NO SCALE



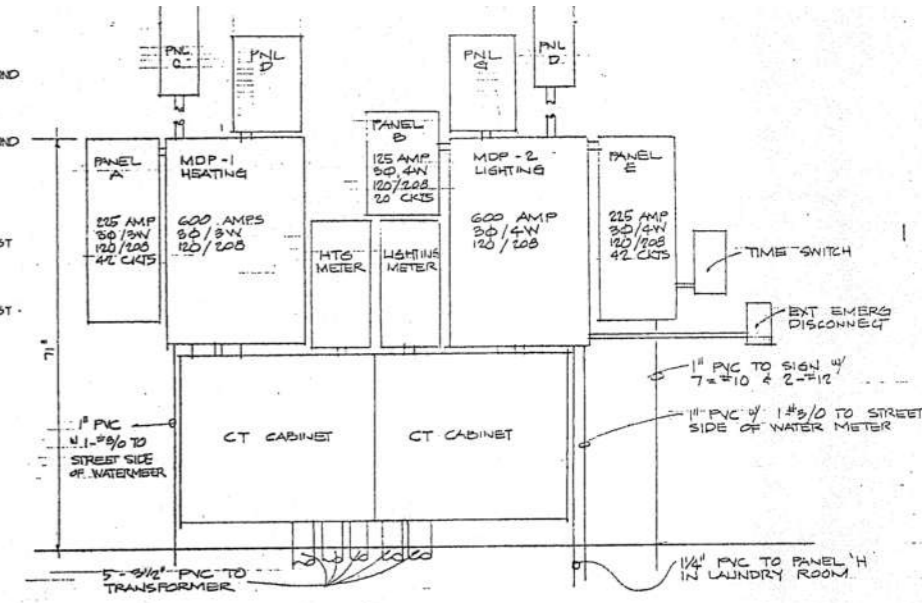
TYPICAL 4 UNIT PLBG RISER
SCALE NO SCALE



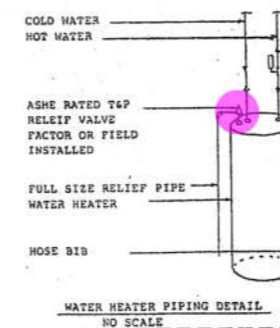
2 UNIT LAV RISER
SCALE NO SCALE



TV RISER DIAGRAM



ELECTRICAL ENTRANCE
SCALE NO SCALE

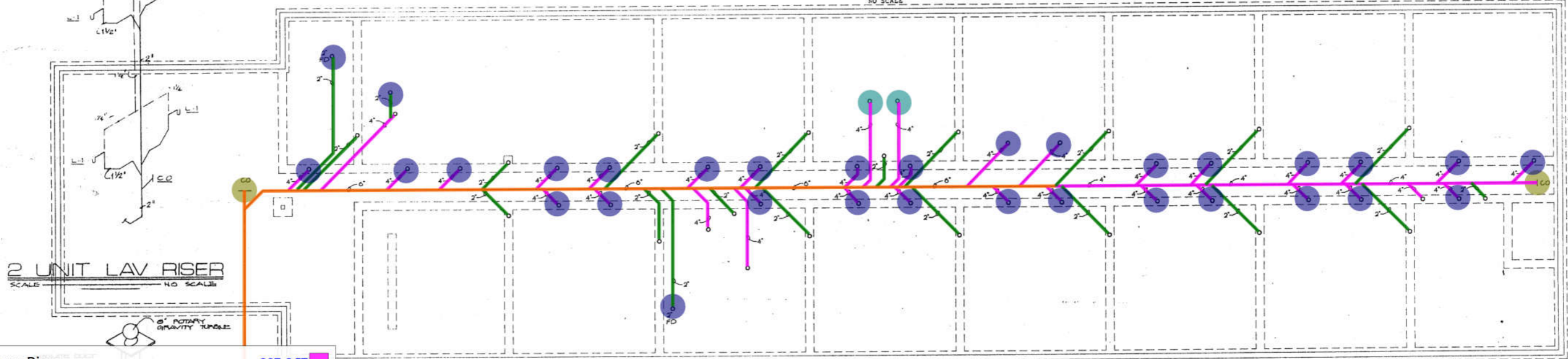


WATER HEATER PIPING DETAIL
SCALE NO SCALE

FEEDER SCHEDULE

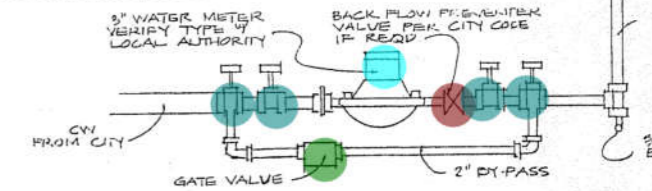
MOP-1						
CIRCUIT	BREAKER	WIRE	CONDUIT	LOAD		
1	225	3 3/4TH	3 2"	NIPPLE	PNL A	
2	225	3 3/4TH	3 2"	EMT	PNL D	
3	225	3 3/4TH	3 2"	EMT	PNL F	
SPACE						
SPACE						

MOP-2						
CIRCUIT	BREAKER	WIRE	CONDUIT	LOAD		
1	100	3 3/4TH	4 1 1/4"	NIPPLE	PNL B	
2	100	3 3/4TH	4 1 1/4"	EMT	PNL D	
3	100	3 3/4TH	4 1 1/4"	EMT	PNL F	
4	200	3 3/4TH	4 2"	NIPPLE	PNL G	
5	60	3 3/4TH	4 1 1/4"	PVC	PNL H	
SPACE						



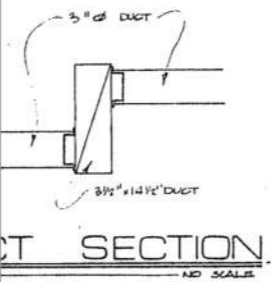
PLUMBING PLAN
SCALE 1/8" = 1'-0"

FIRE SPRINKLER SYSTEM
Furnish and install approved fire sprinkler system complete and in accordance with all applicable codes. Submit system plans and specifications to local authority for approval prior to installation. Modify plans as required in order to comply with local codes and regulations.



WATER METER DIAGRAM
SCALE NO SCALE

- 4" Dia Sanitary Pipe 207.6 FT
- 2" Dia Sanitary Pipe 190.5 FT
- 6" Dia Sanitary Pipe 102.9 FT
- House Bib 1.0 EA
- T&P Reliif Valve 1.0 EA
- Water Meter 1.0 EA
- Back Flow Preventer Valve 1.0 EA
- 2" Dia Gate Valve 1.0 EA
- Shut Off Valve 4.0 EA
- 4" Dia Cleanout 2.0 EA
- 2" Dia Floor Drain 3.0 EA
- 4" Dia Sanitary Pipe Up - (3'-0" H) 29.0 EA
- 4" Dia Floor Drain 2.0 EA



Drain SECTION
SCALE NO SCALE

Eugene H. Wright & Associates - Architects
P.O. BOX 6152, LINCOLN, NEBRASKA 68506 (402)489-8808

PLUMBING PLAN

DATE: 10-21-94
JOB NO.: 94-30
SHEET: 7 OF 8

51 UNIT MOTEL
MONTROSE, COLORADO