

COST SUMMARY

Project:	HIDDEN FOR PRIVACY
Address:	HIDDEN FOR PRIVACY
Scope:	ELECTRICAL
Date:	-

Website: www.alfasquareestimationa.com
 Email: info@alfasquareestimations.com
 Contact +17-869-476685



CSI DIV.	DESCRIPTION	TOTAL TRADE COST	REMARKS		
DIV. 01	GENERAL REQUIREMENTS	\$ -			
DIV. 26	ELECTRICAL	\$ -			
	SUBTOTAL	\$ -			
	OVERHEAD & PROFIT - 15%	\$ -			
	TOTAL BID	\$ -			
	EXCLUSIONS				
	ALL ITEMS NOT MENTIONED ABOVE ARE EXCLUDED				



Estimate of Materials and Cost of Construction

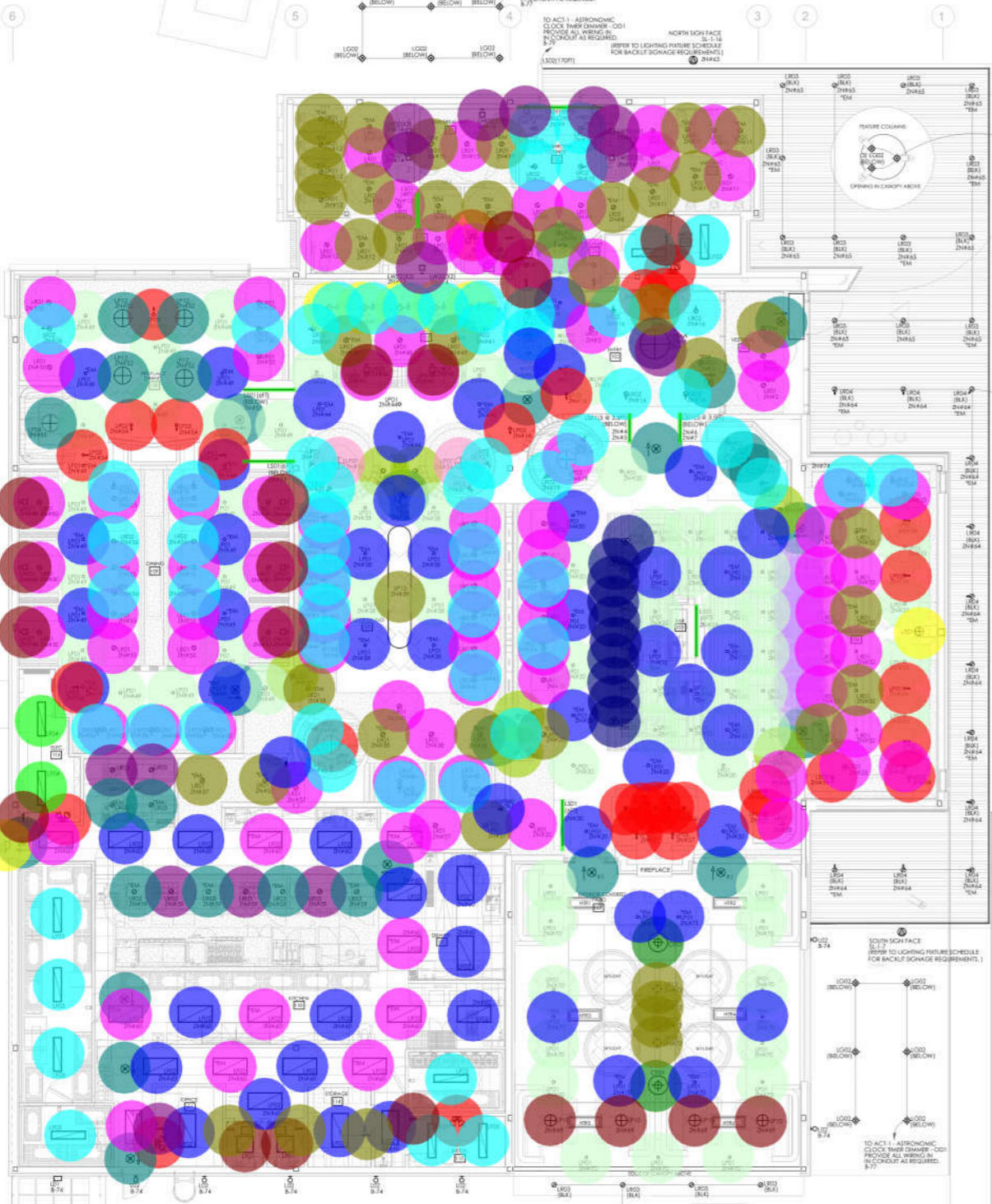
Project: **HIDDEN FOR PRIVACY**
 Address: **HIDDEN FOR PRIVACY**
 Scope: **ELECTRICAL**
 Date: -



Website: www.alfasquareestimationa.com
 Email: info@alfasquareestimations.com
 Contact: +17-869-476685

SR #	REF. SHEET	DETAIL SHEET	DESCRIPTION	QTY.	WASTAGE	QTY WITH WASTAGE	UNIT	UNIT MANHOURS	MANHOUR RATE	UNIT LABOR RATE	TOTAL LABOR COST	UNIT MATERIAL	TOTAL MATERIAL COST	UNIT ITEM COST	TOTALCOST
60			Addressable Smoke Detector - Edwards Siga-OSD	6	0%	6	EA	0.00	\$ -	\$ -	\$ -	\$ -	\$ -	\$ -	\$ -
61			Addressable Single Stage Fire Alarm Pull Station - Edwards Siga-270	3	0%	3	EA	0.00	\$ -	\$ -	\$ -	\$ -	\$ -	\$ -	\$ -
61			Provide Isolator Modules - Edwards	14	0%	14	EA	0.00	\$ -	\$ -	\$ -	\$ -	\$ -	\$ -	\$ -
62			IAM - - Provide Isolator Modules - Edwards	15	0%	15	EA	0.00	\$ -	\$ -	\$ -	\$ -	\$ -	\$ -	\$ -
62			Duct Smoke Detector To Be Install	1	0%	1	EA	0.00	\$ -	\$ -	\$ -	\$ -	\$ -	\$ -	\$ -
ELECTRICAL ALLOWANCES															
63			(2) 1" Conduits & Wire	97	5%	102	LF	0.00	\$ -	\$ -	\$ -	\$ -	\$ -	\$ -	\$ -
63			2" Conduits In Ceiling Space	472	5%	496	LF	0.00	\$ -	\$ -	\$ -	\$ -	\$ -	\$ -	\$ -
64			1" Conduits In Ceiling Space	16	5%	17	LF	0.00	\$ -	\$ -	\$ -	\$ -	\$ -	\$ -	\$ -
SUBTOTAL															\$ -
												TOTAL MATERIAL COST	\$ -		
												TOTAL LABOR COST	\$ -		
												TOTAL COST	\$ -		
												OVERHEAD & PROFIT (15%)	\$ -		
												TOTAL BID	\$ -		





LIGHTING PLAN
SCALE: 1:100

- CF01 - Big Ass Fan - Ceiling Fan, Haiku 52" Outdoor Fan 2.0 EA
- Emergency Lighting Unit w/ Battery, Beghlli Ecco Luna LED 5.0 EA
- Exist Sign, Beghelli Bruno, Black 18.0 EA
- L01 - Brownlee - Brick-OD, Watts: 21W, LED Lumens 1.0 EA
- LF01 - Cooper Lighting - Metalux, 22 GRFA, Watts: 40W, LED: Lumens 2.0 EA
- LF02 - Cooper Lighting - Metalux, 24 GRFA w/ Battery Pack, Watts: 48W, LED: Lumens 10.0 EA
- LF02 - Cooper Lighting - Metalux, 24 GRFA, Watts: 48W, LED: Lumens 15.0 EA
- LF03 - Cooper Lighting - Metalux, 44VT3, Watts: 30W, LED: Lumens 9.0 EA
- LF04 - Cooper Lighting - Metalux, 4WSNLED, Watts: 44W, LED: Lumens 2.0 EA
- LG01 - MP Lighting - L08-2-W30S-S-D-S-O-MA & Remote LED Driver In Accessible Concealed Location, Watts: 2.5W, LED: Watt 7.0 EA
- LG03 - WAC Lighting - HR-LED-87 LEDME Button Light, Watts: 4.8W, LED: Lumens 9.0 EA
- Lighting Control 3.0 EA
- LP01 - Lighthouse Lighting w/ Emergency Battery Pack, Black Trim, Watts: 12W, LED: Xicato 39.0 EA
- LP01 - Lighthouse Lighting, Black Trim, Watts: 12W, LED: Xicato 63.0 EA
- LP02 - Lighthouse Lighting, Black Trim, Watts: 12W, LED: Xicato 18.0 EA
- LP03 - Foscarini Garcia Cumini, Sopkes 2 Large Suspension, Color: Copper, 20.5" Dia, Watts: 40Wm, LED: Blub Rite 1.0 EA
- LP04 - LZP Suspension Large Escape By Ray Power, Wood: 28 Blue, Canopy Finish: BK - Matte Black, Watts: 8.5W, LED: Blub Rite 3.0 EA
- LP05 - BOCCI - 28.3c Random Round Canopy, 10'-0" Coax, 20W Xenon, Blown Glass, Copper Tubing, Watts: 20W, LED: Xenon 10.0 EA
- LP06B - (Custom Fixture) Electrical Control Shall Provide Rough-In 1.0 EA
- LP06A - (Custom Fixture) Electrical Control Shall Provide Rough-In 1.0 EA
- LP07 - A-N-D Lighting, Column 300, 2-Unit Vertical Pendant, Finish: Carbon, Watts: 12W, LED: CRI Blub 2.0 EA
- LP08 - Visual Comport & Co. Blok Large Pendant, Matte Black, Finish: Carbon, Watts: 8W, LED: CRI Blub 7.0 EA
- LP09 - BOCCI - 21.7 Series, Cluster Column, Canopy: Black, Cable Length: 10'-0" LF, Watts: 20W, LED: Xenon 1.0 EA
- LP10 - (TBD) Electrical Control Shall Provide Rough-In 4.0 EA
- LP11 - Seed Design - Ling Pendant V. Steel Frosted, Glass Matt Black, Color: Matt Black, Watts: 6W, LED: Lumens 5.0 EA
- LP12 - (TBD) - Electrical Control Shall Provided Rough-In 4.0 EA
- LP13 - (Custom) - Electrical Control Shall Provided Rough-In 5.0 EA
- LR01 - Lighthouse Lighting - Trimmed Remodel Driver w/ Emergency Battery Pack, Watts: 13W, LED: Xicato 34.0 EA
- LR01 - Lighthouse Lighting - Trimmed Remodel Driver, Watts: 13W, LED: Xicato 80.0 EA
- LR02 - Lighthouse Lighting - EC Shall Install Octagonal Box Prior To Ceiling, Watts: 12W, LED: Xicato 53.0 EA
- LR03 - Lighthouse Lighting w/ Battery Pack, Watts: 13W, LED: Xicato 6.0 EA
- LR03 - Lighthouse Lighting, Watts: 13W, LED: Xicato 5.0 EA
- LS01 - LED Linear Lighting Solutions - Vario LED Flex Hudra - HD10-W9-27, Watts: 3.1W, LED: Lumens 45.3 FT
- LT01 - BOCCI Lighting - 28.3 Floor Shot, Brass Steam, 2 Color, 1 Clear, Watts: 10W, LED: Xenon 1.0 EA
- LW01 - BOCCI Lighting - 14S/SP, Clear, Finish: Black Powder Coated Metal, Watts: 10W, LED: Xenon 8.0 EA
- LW02 (x2) - BOCCI Lighting - 28S/SP, w/ Black Powder Coated Metal, Finish: Blue, Watts: 10W, LED: Xenon 8.0 EA
- Single Pole - Lutron Dimmer Switch 0-10V 1.0 EA
- Single Pole - Lutron Occupancy Sensor Switch 4.0 EA
- Single Pole Switch, 15A, 120V, Decora Switch Lutron 5.0 EA

ITEM	DESCRIPTION	QUANTITY	UNITS	REMARKS	NOTES
1001	LED LINEAR LIGHTING - 28.3 FLOOR SHOT BRASS STEAM 2 COLOR 1 CLEAR 10W LED XENON	1	EA	REFER TO ARCHITECTURAL DRAWINGS FOR REQUIRED MOUNTING HEIGHT	REFER TO ARCHITECTURAL DRAWINGS FOR REQUIRED MOUNTING HEIGHT
1002	LED LINEAR LIGHTING - 14S/SP CLEAR FINISH BLACK POWDER COATED METAL 10W LED XENON	2	EA	REFER TO ARCHITECTURAL DRAWINGS FOR REQUIRED MOUNTING HEIGHT	REFER TO ARCHITECTURAL DRAWINGS FOR REQUIRED MOUNTING HEIGHT
1003	LED LINEAR LIGHTING - 28S/SP BLACK POWDER COATED METAL FINISH BLUE 10W LED XENON	2	EA	REFER TO ARCHITECTURAL DRAWINGS FOR REQUIRED MOUNTING HEIGHT	REFER TO ARCHITECTURAL DRAWINGS FOR REQUIRED MOUNTING HEIGHT
1004	LED LINEAR LIGHTING - 28S/SP BLACK POWDER COATED METAL FINISH BLUE 10W LED XENON	2	EA	REFER TO ARCHITECTURAL DRAWINGS FOR REQUIRED MOUNTING HEIGHT	REFER TO ARCHITECTURAL DRAWINGS FOR REQUIRED MOUNTING HEIGHT
1005	LED LINEAR LIGHTING - 28S/SP BLACK POWDER COATED METAL FINISH BLUE 10W LED XENON	2	EA	REFER TO ARCHITECTURAL DRAWINGS FOR REQUIRED MOUNTING HEIGHT	REFER TO ARCHITECTURAL DRAWINGS FOR REQUIRED MOUNTING HEIGHT
1006	LED LINEAR LIGHTING - 28S/SP BLACK POWDER COATED METAL FINISH BLUE 10W LED XENON	2	EA	REFER TO ARCHITECTURAL DRAWINGS FOR REQUIRED MOUNTING HEIGHT	REFER TO ARCHITECTURAL DRAWINGS FOR REQUIRED MOUNTING HEIGHT
1007	LED LINEAR LIGHTING - 28S/SP BLACK POWDER COATED METAL FINISH BLUE 10W LED XENON	2	EA	REFER TO ARCHITECTURAL DRAWINGS FOR REQUIRED MOUNTING HEIGHT	REFER TO ARCHITECTURAL DRAWINGS FOR REQUIRED MOUNTING HEIGHT
1008	LED LINEAR LIGHTING - 28S/SP BLACK POWDER COATED METAL FINISH BLUE 10W LED XENON	2	EA	REFER TO ARCHITECTURAL DRAWINGS FOR REQUIRED MOUNTING HEIGHT	REFER TO ARCHITECTURAL DRAWINGS FOR REQUIRED MOUNTING HEIGHT
1009	LED LINEAR LIGHTING - 28S/SP BLACK POWDER COATED METAL FINISH BLUE 10W LED XENON	2	EA	REFER TO ARCHITECTURAL DRAWINGS FOR REQUIRED MOUNTING HEIGHT	REFER TO ARCHITECTURAL DRAWINGS FOR REQUIRED MOUNTING HEIGHT
1010	LED LINEAR LIGHTING - 28S/SP BLACK POWDER COATED METAL FINISH BLUE 10W LED XENON	2	EA	REFER TO ARCHITECTURAL DRAWINGS FOR REQUIRED MOUNTING HEIGHT	REFER TO ARCHITECTURAL DRAWINGS FOR REQUIRED MOUNTING HEIGHT
1011	LED LINEAR LIGHTING - 28S/SP BLACK POWDER COATED METAL FINISH BLUE 10W LED XENON	2	EA	REFER TO ARCHITECTURAL DRAWINGS FOR REQUIRED MOUNTING HEIGHT	REFER TO ARCHITECTURAL DRAWINGS FOR REQUIRED MOUNTING HEIGHT
1012	LED LINEAR LIGHTING - 28S/SP BLACK POWDER COATED METAL FINISH BLUE 10W LED XENON	2	EA	REFER TO ARCHITECTURAL DRAWINGS FOR REQUIRED MOUNTING HEIGHT	REFER TO ARCHITECTURAL DRAWINGS FOR REQUIRED MOUNTING HEIGHT
1013	LED LINEAR LIGHTING - 28S/SP BLACK POWDER COATED METAL FINISH BLUE 10W LED XENON	2	EA	REFER TO ARCHITECTURAL DRAWINGS FOR REQUIRED MOUNTING HEIGHT	REFER TO ARCHITECTURAL DRAWINGS FOR REQUIRED MOUNTING HEIGHT
1014	LED LINEAR LIGHTING - 28S/SP BLACK POWDER COATED METAL FINISH BLUE 10W LED XENON	2	EA	REFER TO ARCHITECTURAL DRAWINGS FOR REQUIRED MOUNTING HEIGHT	REFER TO ARCHITECTURAL DRAWINGS FOR REQUIRED MOUNTING HEIGHT
1015	LED LINEAR LIGHTING - 28S/SP BLACK POWDER COATED METAL FINISH BLUE 10W LED XENON	2	EA	REFER TO ARCHITECTURAL DRAWINGS FOR REQUIRED MOUNTING HEIGHT	REFER TO ARCHITECTURAL DRAWINGS FOR REQUIRED MOUNTING HEIGHT
1016	LED LINEAR LIGHTING - 28S/SP BLACK POWDER COATED METAL FINISH BLUE 10W LED XENON	2	EA	REFER TO ARCHITECTURAL DRAWINGS FOR REQUIRED MOUNTING HEIGHT	REFER TO ARCHITECTURAL DRAWINGS FOR REQUIRED MOUNTING HEIGHT
1017	LED LINEAR LIGHTING - 28S/SP BLACK POWDER COATED METAL FINISH BLUE 10W LED XENON	2	EA	REFER TO ARCHITECTURAL DRAWINGS FOR REQUIRED MOUNTING HEIGHT	REFER TO ARCHITECTURAL DRAWINGS FOR REQUIRED MOUNTING HEIGHT
1018	LED LINEAR LIGHTING - 28S/SP BLACK POWDER COATED METAL FINISH BLUE 10W LED XENON	2	EA	REFER TO ARCHITECTURAL DRAWINGS FOR REQUIRED MOUNTING HEIGHT	REFER TO ARCHITECTURAL DRAWINGS FOR REQUIRED MOUNTING HEIGHT
1019	LED LINEAR LIGHTING - 28S/SP BLACK POWDER COATED METAL FINISH BLUE 10W LED XENON	2	EA	REFER TO ARCHITECTURAL DRAWINGS FOR REQUIRED MOUNTING HEIGHT	REFER TO ARCHITECTURAL DRAWINGS FOR REQUIRED MOUNTING HEIGHT
1020	LED LINEAR LIGHTING - 28S/SP BLACK POWDER COATED METAL FINISH BLUE 10W LED XENON	2	EA	REFER TO ARCHITECTURAL DRAWINGS FOR REQUIRED MOUNTING HEIGHT	REFER TO ARCHITECTURAL DRAWINGS FOR REQUIRED MOUNTING HEIGHT
1021	LED LINEAR LIGHTING - 28S/SP BLACK POWDER COATED METAL FINISH BLUE 10W LED XENON	2	EA	REFER TO ARCHITECTURAL DRAWINGS FOR REQUIRED MOUNTING HEIGHT	REFER TO ARCHITECTURAL DRAWINGS FOR REQUIRED MOUNTING HEIGHT
1022	LED LINEAR LIGHTING - 28S/SP BLACK POWDER COATED METAL FINISH BLUE 10W LED XENON	2	EA	REFER TO ARCHITECTURAL DRAWINGS FOR REQUIRED MOUNTING HEIGHT	REFER TO ARCHITECTURAL DRAWINGS FOR REQUIRED MOUNTING HEIGHT
1023	LED LINEAR LIGHTING - 28S/SP BLACK POWDER COATED METAL FINISH BLUE 10W LED XENON	2	EA	REFER TO ARCHITECTURAL DRAWINGS FOR REQUIRED MOUNTING HEIGHT	REFER TO ARCHITECTURAL DRAWINGS FOR REQUIRED MOUNTING HEIGHT
1024	LED LINEAR LIGHTING - 28S/SP BLACK POWDER COATED METAL FINISH BLUE 10W LED XENON	2	EA	REFER TO ARCHITECTURAL DRAWINGS FOR REQUIRED MOUNTING HEIGHT	REFER TO ARCHITECTURAL DRAWINGS FOR REQUIRED MOUNTING HEIGHT
1025	LED LINEAR LIGHTING - 28S/SP BLACK POWDER COATED METAL FINISH BLUE 10W LED XENON	2	EA	REFER TO ARCHITECTURAL DRAWINGS FOR REQUIRED MOUNTING HEIGHT	REFER TO ARCHITECTURAL DRAWINGS FOR REQUIRED MOUNTING HEIGHT
1026	LED LINEAR LIGHTING - 28S/SP BLACK POWDER COATED METAL FINISH BLUE 10W LED XENON	2	EA	REFER TO ARCHITECTURAL DRAWINGS FOR REQUIRED MOUNTING HEIGHT	REFER TO ARCHITECTURAL DRAWINGS FOR REQUIRED MOUNTING HEIGHT
1027	LED LINEAR LIGHTING - 28S/SP BLACK POWDER COATED METAL FINISH BLUE 10W LED XENON	2	EA	REFER TO ARCHITECTURAL DRAWINGS FOR REQUIRED MOUNTING HEIGHT	REFER TO ARCHITECTURAL DRAWINGS FOR REQUIRED MOUNTING HEIGHT
1028	LED LINEAR LIGHTING - 28S/SP BLACK POWDER COATED METAL FINISH BLUE 10W LED XENON	2	EA	REFER TO ARCHITECTURAL DRAWINGS FOR REQUIRED MOUNTING HEIGHT	REFER TO ARCHITECTURAL DRAWINGS FOR REQUIRED MOUNTING HEIGHT
1029	LED LINEAR LIGHTING - 28S/SP BLACK POWDER COATED METAL FINISH BLUE 10W LED XENON	2	EA	REFER TO ARCHITECTURAL DRAWINGS FOR REQUIRED MOUNTING HEIGHT	REFER TO ARCHITECTURAL DRAWINGS FOR REQUIRED MOUNTING HEIGHT
1030	LED LINEAR LIGHTING - 28S/SP BLACK POWDER COATED METAL FINISH BLUE 10W LED XENON	2	EA	REFER TO ARCHITECTURAL DRAWINGS FOR REQUIRED MOUNTING HEIGHT	REFER TO ARCHITECTURAL DRAWINGS FOR REQUIRED MOUNTING HEIGHT
1031	LED LINEAR LIGHTING - 28S/SP BLACK POWDER COATED METAL FINISH BLUE 10W LED XENON	2	EA	REFER TO ARCHITECTURAL DRAWINGS FOR REQUIRED MOUNTING HEIGHT	REFER TO ARCHITECTURAL DRAWINGS FOR REQUIRED MOUNTING HEIGHT
1032	LED LINEAR LIGHTING - 28S/SP BLACK POWDER COATED METAL FINISH BLUE 10W LED XENON	2	EA	REFER TO ARCHITECTURAL DRAWINGS FOR REQUIRED MOUNTING HEIGHT	REFER TO ARCHITECTURAL DRAWINGS FOR REQUIRED MOUNTING HEIGHT
1033	LED LINEAR LIGHTING - 28S/SP BLACK POWDER COATED METAL FINISH BLUE 10W LED XENON	2	EA	REFER TO ARCHITECTURAL DRAWINGS FOR REQUIRED MOUNTING HEIGHT	REFER TO ARCHITECTURAL DRAWINGS FOR REQUIRED MOUNTING HEIGHT
1034	LED LINEAR LIGHTING - 28S/SP BLACK POWDER COATED METAL FINISH BLUE 10W LED XENON	2	EA	REFER TO ARCHITECTURAL DRAWINGS FOR REQUIRED MOUNTING HEIGHT	REFER TO ARCHITECTURAL DRAWINGS FOR REQUIRED MOUNTING HEIGHT
1035	LED LINEAR LIGHTING - 28S/SP BLACK POWDER COATED METAL FINISH BLUE 10W LED XENON	2	EA	REFER TO ARCHITECTURAL DRAWINGS FOR REQUIRED MOUNTING HEIGHT	REFER TO ARCHITECTURAL DRAWINGS FOR REQUIRED MOUNTING HEIGHT
1036	LED LINEAR LIGHTING - 28S/SP BLACK POWDER COATED METAL FINISH BLUE 10W LED XENON	2	EA	REFER TO ARCHITECTURAL DRAWINGS FOR REQUIRED MOUNTING HEIGHT	REFER TO ARCHITECTURAL DRAWINGS FOR REQUIRED MOUNTING HEIGHT
1037	LED LINEAR LIGHTING - 28S/SP BLACK POWDER COATED METAL FINISH BLUE 10W LED XENON	2	EA	REFER TO ARCHITECTURAL DRAWINGS FOR REQUIRED MOUNTING HEIGHT	REFER TO ARCHITECTURAL DRAWINGS FOR REQUIRED MOUNTING HEIGHT
1038	LED LINEAR LIGHTING - 28S/SP BLACK POWDER COATED METAL FINISH BLUE 10W LED XENON	2	EA	REFER TO ARCHITECTURAL DRAWINGS FOR REQUIRED MOUNTING HEIGHT	REFER TO ARCHITECTURAL DRAWINGS FOR REQUIRED MOUNTING HEIGHT
1039	LED LINEAR LIGHTING - 28S/SP BLACK POWDER COATED METAL FINISH BLUE 10W LED XENON	2	EA	REFER TO ARCHITECTURAL DRAWINGS FOR REQUIRED MOUNTING HEIGHT	REFER TO ARCHITECTURAL DRAWINGS FOR REQUIRED MOUNTING HEIGHT
1040	LED LINEAR LIGHTING - 28S/SP BLACK POWDER COATED METAL FINISH BLUE 10W LED XENON	2	EA	REFER TO ARCHITECTURAL DRAWINGS FOR REQUIRED MOUNTING HEIGHT	REFER TO ARCHITECTURAL DRAWINGS FOR REQUIRED MOUNTING HEIGHT
1041	LED LINEAR LIGHTING - 28S/SP BLACK POWDER COATED METAL FINISH BLUE 10W LED XENON	2	EA	REFER TO ARCHITECTURAL DRAWINGS FOR REQUIRED MOUNTING HEIGHT	REFER TO ARCHITECTURAL DRAWINGS FOR REQUIRED MOUNTING HEIGHT
1042	LED LINEAR LIGHTING - 28S/SP BLACK POWDER COATED METAL FINISH BLUE 10W LED XENON	2	EA	REFER TO ARCHITECTURAL DRAWINGS FOR REQUIRED MOUNTING HEIGHT	REFER TO ARCHITECTURAL DRAWINGS FOR REQUIRED MOUNTING HEIGHT
1043	LED LINEAR LIGHTING - 28S/SP BLACK POWDER COATED METAL FINISH BLUE 10W LED XENON	2	EA	REFER TO ARCHITECTURAL DRAWINGS FOR REQUIRED MOUNTING HEIGHT	REFER TO ARCHITECTURAL DRAWINGS FOR REQUIRED MOUNTING HEIGHT
1044	LED LINEAR LIGHTING - 28S/SP BLACK POWDER COATED METAL FINISH BLUE 10W LED XENON	2	EA	REFER TO ARCHITECTURAL DRAWINGS FOR REQUIRED MOUNTING HEIGHT	REFER TO ARCHITECTURAL DRAWINGS FOR REQUIRED MOUNTING HEIGHT
1045	LED LINEAR LIGHTING - 28S/SP BLACK POWDER COATED METAL FINISH BLUE 10W LED XENON	2	EA	REFER TO ARCHITECTURAL DRAWINGS FOR REQUIRED MOUNTING HEIGHT	REFER TO ARCHITECTURAL DRAWINGS FOR REQUIRED MOUNTING HEIGHT
1046	LED LINEAR LIGHTING - 28S/SP BLACK POWDER COATED METAL FINISH BLUE 10W LED XENON	2	EA	REFER TO ARCHITECTURAL DRAWINGS FOR REQUIRED MOUNTING HEIGHT	REFER TO ARCHITECTURAL DRAWINGS FOR REQUIRED MOUNTING HEIGHT
1047	LED LINEAR LIGHTING - 28S/SP BLACK POWDER COATED METAL FINISH BLUE 10W LED XENON	2	EA	REFER TO ARCHITECTURAL DRAWINGS FOR REQUIRED MOUNTING HEIGHT	REFER TO ARCHITECTURAL DRAWINGS FOR REQUIRED MOUNTING HEIGHT
1048	LED LINEAR LIGHTING - 28S/SP BLACK POWDER COATED METAL FINISH BLUE 10W LED XENON	2	EA	REFER TO ARCHITECTURAL DRAWINGS FOR REQUIRED MOUNTING HEIGHT	REFER TO ARCHITECTURAL DRAWINGS FOR REQUIRED MOUNTING HEIGHT
1049	LED LINEAR LIGHTING - 28S/SP BLACK POWDER COATED METAL FINISH BLUE 10W LED XENON	2	EA	REFER TO ARCHITECTURAL DRAWINGS FOR REQUIRED MOUNTING HEIGHT	REFER TO ARCHITECTURAL DRAWINGS FOR REQUIRED MOUNTING HEIGHT
1050	LED LINEAR LIGHTING - 28S/SP BLACK POWDER COATED METAL FINISH BLUE 10W LED XENON	2	EA	REFER TO ARCHITECTURAL DRAWINGS FOR REQUIRED MOUNTING HEIGHT	REFER TO ARCHITECTURAL DRAWINGS FOR REQUIRED MOUNTING HEIGHT

POWER PANEL - 'PP-A'				ZSA 120/208V, 3PH, 4W				LOCATION: ELEC ROOM 100					
LOAD	CIRCUIT DESCRIPTION	1	2	CIRCUIT DESCRIPTION	LOAD	CIRCUIT DESCRIPTION	1	2	CIRCUIT DESCRIPTION	LOAD	CIRCUIT DESCRIPTION	1	2
SPD		1	2	SPR RECEPTACLES	41	CONVEYER HOOD	41	2	CONVEYER RECEPTACLES	41	CONVEYER 3, BARKHOLD	41	2
		3	4	BAR RECEPTACLES	42	CONVEYER BELL	42	2	CONVEYER BAR	42	CONVEYER COOK LINE (BARK)	42	2
		5	6	ROOFER	43	CONVEYER REFR	43	2	CONVEYER REFR	43	CONVEYER BAR	43	2
		7	8	BAR COOLER	44	CONVEYER SETUP	44	2	CONVEYER SETUP	44	CONVEYER BAR	44	2
		9	10	WINE COOLER	45	CONVEYER REFR	45	2	CONVEYER REFR	45	CONVEYER BAR	45	2
		11	12	WINE COOLER	46	CONVEYER REFR	46	2	CONVEYER REFR	46	CONVEYER BAR	46	2
		13	14	WINE COOLER	47	CONVEYER REFR	47	2	CONVEYER REFR	47	CONVEYER BAR	47	2
		15	16	WINE COOLER	48	CONVEYER REFR	48	2	CONVEYER REFR	48	CONVEYER BAR	48	2
		17	18	WINE COOLER	49	CONVEYER REFR	49	2	CONVEYER REFR	49	CONVEYER BAR	49	2
		19	20	WINE COOLER	50	CONVEYER REFR	50	2	CONVEYER REFR	50	CONVEYER BAR	50	2
		21	22	WINE COOLER	51	CONVEYER REFR	51	2	CONVEYER REFR	51	CONVEYER BAR	51	2
		23	24	WINE COOLER	52	CONVEYER REFR	52	2	CONVEYER REFR	52	CONVEYER BAR	52	2
		25	26	WINE COOLER	53	CONVEYER REFR	53	2	CONVEYER REFR	53	CONVEYER BAR	53	2
		27	28	WINE COOLER	54	CONVEYER REFR	54	2	CONVEYER REFR	54	CONVEYER BAR	54	2
		29	30	WINE COOLER	55	CONVEYER REFR	55	2	CONVEYER REFR	55	CONVEYER BAR	55	2
		31	32	WINE COOLER	56	CONVEYER REFR	56	2	CONVEYER REFR	56	CONVEYER BAR	56	2
		33	34	WINE COOLER	57	CONVEYER REFR	57	2	CONVEYER REFR	57	CONVEYER BAR	57	2
		35	36	WINE COOLER	58	CONVEYER REFR	58	2	CONVEYER REFR	58	CONVEYER BAR	58	2
		37	38	WINE COOLER	59	CONVEYER REFR	59	2	CONVEYER REFR	59	CONVEYER BAR	59	2
		39	40	WINE COOLER	60	CONVEYER REFR	60	2	CONVEYER REFR	60	CONVEYER BAR	60	2
		41	42	WINE COOLER	61	CONVEYER REFR	61	2	CONVEYER REFR	61	CONVEYER BAR	61	2
		43	44	WINE COOLER	62	CONVEYER REFR	62	2	CONVEYER REFR	62	CONVEYER BAR	62	2
		45	46	WINE COOLER	63	CONVEYER REFR	63	2	CONVEYER REFR	63	CONVEYER BAR	63	2
		47	48	WINE COOLER	64	CONVEYER REFR	64	2	CONVEYER REFR	64	CONVEYER BAR	64	2
		49	50	WINE COOLER	65	CONVEYER REFR	65	2	CONVEYER REFR	65	CONVEYER BAR	65	2
		51	52	WINE COOLER	66	CONVEYER REFR	66	2	CONVEYER REFR	66	CONVEYER BAR	66	2
		53	54	WINE COOLER	67	CONVEYER REFR	67	2	CONVEYER REFR	67	CONVEYER BAR	67	2
		55	56	WINE COOLER	68	CONVEYER REFR	68	2	CONVEYER REFR	68	CONVEYER BAR	68	2
		57	58	WINE COOLER	69	CONVEYER REFR	69	2	CONVEYER REFR	69	CONVEYER BAR	69	2
		59	60	WINE COOLER	70	CONVEYER REFR	70	2	CONVEYER REFR	70	CONVEYER BAR	70	2

POWER PANEL - 'PP-B'				ZSA 120/208V, 3PH, 4W				LOCATION: ELEC ROOM 100					
LOAD	CIRCUIT DESCRIPTION	1	2	CIRCUIT DESCRIPTION	LOAD	CIRCUIT DESCRIPTION	1	2	CIRCUIT DESCRIPTION	LOAD	CIRCUIT DESCRIPTION	1	2
	LIGHTING ZONE #1 & #2	1	2	CONVEYER RECEPTACLES	41	CONVEYER HOOD	41	2	CONVEYER RECEPTACLES	41	CONVEYER 3, BARKHOLD	41	2
	LIGHTING ZONE #3 & #4	3	4	CONVEYER BELL	42	CONVEYER REFR	42	2	CONVEYER REFR	42	CONVEYER BAR	42	2
	LIGHTING ZONE #5 & #6	5	6	CONVEYER REFR	43	CONVEYER SETUP	43	2	CONVEYER SETUP	43	CONVEYER BAR	43	2
	LIGHTING ZONE #7 & #8	7	8	CONVEYER REFR	44	CONVEYER REFR	44	2	CONVEYER REFR	44	CONVEYER BAR	44	2
	LIGHTING ZONE #9 & #10	9	10	CONVEYER REFR	45	CONVEYER REFR	45	2	CONVEYER REFR	45	CONVEYER BAR	45	2
	LIGHTING ZONE #11 & #12	11	12	CONVEYER REFR	46	CONVEYER REFR	46	2	CONVEYER REFR	46	CONVEYER BAR	46	2
	LIGHTING ZONE #13 & #14	13	14	CONVEYER REFR	47	CONVEYER REFR	47	2	CONVEYER REFR	47	CONVEYER BAR	47	2
	LIGHTING ZONE #15 & #16	15	16	CONVEYER REFR	48	CONVEYER REFR	48	2	CONVEYER REFR	48	CONVEYER BAR	48	2
	LIGHTING ZONE #17 & #18	17	18	CONVEYER REFR	49	CONVEYER REFR	49	2	CONVEYER REFR	49	CONVEYER BAR	49	2
	LIGHTING ZONE #19 & #20	19	20	CONVEYER REFR	50	CONVEYER REFR	50	2	CONVEYER REFR	50	CONVEYER BAR	50	2
	LIGHTING ZONE #21 & #22	21	22	CONVEYER REFR	51	CONVEYER REFR	51	2	CONVEYER REFR	51	CONVEYER BAR	51	2
	LIGHTING ZONE #23 & #24	23	24	CONVEYER REFR	52	CONVEYER REFR	52	2	CONVEYER REFR	52	CONVEYER BAR	52	2
	LIGHTING ZONE #25 & #26	25	26	CONVEYER REFR	53	CONVEYER REFR	53	2	CONVEYER REFR	53	CONVEYER BAR	53	2
	LIGHTING ZONE #27 & #28	27	28	CONVEYER REFR	54	CONVEYER REFR	54	2	CONVEYER REFR	54	CONVEYER BAR	54	2
	LIGHTING ZONE #29 & #30	29	30	CONVEYER REFR	55	CONVEYER REFR	55	2	CONVEYER REFR	55	CONVEYER BAR	55	2
	LIGHTING ZONE #31 & #32	31	32	CONVEYER REFR	56	CONVEYER REFR	56	2	CONVEYER REFR	56	CONVEYER BAR	56	2
	LIGHTING ZONE #33 & #34	33	34	CONVEYER REFR	57	CONVEYER REFR	57	2	CONVEYER REFR	57	CONVEYER BAR	57	2
	LIGHTING ZONE #35 & #36	35	36	CONVEYER REFR	58	CONVEYER REFR	58	2	CONVEYER REFR	58	CONVEYER BAR	58	2
	LIGHTING ZONE #37 & #38	37	38	CONVEYER REFR	59	CONVEYER REFR	59	2	CONVEYER REFR	59	CONVEYER BAR	59	2
	LIGHTING ZONE #39 & #40	39	40	CONVEYER REFR	60	CONVEYER REFR	60	2	CONVEYER REFR	60	CONVEYER BAR	60	2
	LIGHTING ZONE #41 & #42	41	42	CONVEYER REFR	61	CONVEYER REFR	61	2	CONVEYER REFR	61	CONVEYER BAR	61	2
	LIGHTING ZONE #43 & #44	43	44	CONVEYER REFR	62	CONVEYER REFR	62	2	CONVEYER REFR	62	CONVEYER BAR	62	2
	LIGHTING ZONE #45 & #46	45	46	CONVEYER REFR	63	CONVEYER REFR	63	2	CONVEYER REFR	63	CONVEYER BAR	63	2
	LIGHTING ZONE #47 & #48	47	48	CONVEYER REFR	64	CONVEYER REFR	64	2	CONVEYER REFR	64	CONVEYER BAR	64	2
	LIGHTING ZONE #49 & #50	49	50	CONVEYER REFR	65	CONVEYER REFR	65	2	CONVEYER REFR	65	CONVEYER BAR	65	2
	LIGHTING ZONE #51 & #52	51	52	CONVEYER REFR	66	CONVEYER REFR	66	2	CONVEYER REFR	66	CONVEYER BAR	66	2
	LIGHTING ZONE #53 & #54	53	54	CONVEYER REFR	67	CONVEYER REFR	67	2	CONVEYER REFR	67	CONVEYER BAR	67	2
	LIGHTING ZONE #55 & #56	55	56	CONVEYER REFR	68	CONVEYER REFR	68	2	CONVEYER REFR	68	CONVEYER BAR	68	2
	LIGHTING ZONE #57 & #58	57	58	CONVEYER REFR	69	CONVEYER REFR	69	2	CONVEYER REFR	69	CONVEYER BAR	69	2
	LIGHTING ZONE #59 & #60	59	60	CONVEYER REFR	70	CONVEYER REFR	70	2	CONVEYER REFR	70	CONVEYER BAR	70	2

POWER PANEL - 'PP-K'				ZSA 120/208V, 3PH, 4W				LOCATION: ELEC ROOM 100					
LOAD	CIRCUIT DESCRIPTION	1	2	CIRCUIT DESCRIPTION	LOAD	CIRCUIT DESCRIPTION	1	2	CIRCUIT DESCRIPTION	LOAD	CIRCUIT DESCRIPTION	1	2
SPD		1	2	CONVEYER RECEPTACLES	41	CONVEYER HOOD	41	2	CONVEYER RECEPTACLES	41	CONVEYER 3, BARKHOLD	41	2
		3	4	CONVEYER BELL	42	CONVEYER REFR	42	2	CONVEYER REFR	42	CONVEYER BAR	42	2
		5	6	CONVEYER REFR	43	CONVEYER SETUP	43	2	CONVEYER SETUP	43	CONVEYER BAR	43	2
		7	8	CONVEYER REFR	44	CONVEYER REFR	44	2	CONVEYER REFR	44	CONVEYER BAR	44	2
		9	10	CONVEYER REFR	45	CONVEYER REFR	45	2	CONVEYER REFR	45	CONVEYER BAR	45	2
		11	12	CONVEYER REFR	46	CONVEYER REFR	46	2	CONVEYER REFR	46	CONVEYER BAR	46	2
		13	14	CONVEYER REFR	47	CONVEYER REFR	47	2	CONVEYER REFR	47	CONVEYER BAR	47	2
		15	16	CONVEYER REFR	48	CONVEYER REFR	48	2	CONVEYER REFR	48	CONVEYER BAR	48	2
		17	18	CONVEYER REFR	49	CONVEYER REFR	49	2	CONVEYER REFR	49	CONVEYER BAR	49	2
		19	20	CONVEYER REFR	50	CONVEYER REFR	50	2	CONVEYER REFR	50	CONVEYER BAR	50	2
		21	22	CONVEYER REFR	51	CONVEYER REFR	51	2	CONVEYER REFR	51	CONVEYER BAR	51	2
		23	24	CONVEYER REFR	52	CONVEYER REFR	52	2	CONVEYER REFR	52	CONVEYER BAR	52	2
		25	26	CONVEYER REFR	53	CONVEYER REFR	53	2	CONVEYER REFR	53	CONVEYER BAR	53	2
		27	28	CONVEYER REFR	54	CONVEYER REFR	54	2	CONVEYER REFR	54	CONVEYER BAR	54	2
		29	30	CONVEYER REFR	55	CONVEYER REFR	55	2	CONVEYER REFR	55	CONVEYER BAR	55	2
		31	32	CONVEYER REFR	56	CONVEYER REFR	56	2	CONVEYER REFR	56	CONVEYER BAR	56	2
		33	34	CONVEYER REFR	57	CONVEYER REFR	57	2	CONVEYER REFR	57	CONVEYER BAR	57	2
		35	36	CONVEYER REFR	58	CONVEYER REFR	58	2	CONVEYER REFR	58	CONVEYER BAR	58	2
		37	38	CONVEYER REFR	59	CONVEYER REFR	59	2	CONVEYER REFR	59	CONVEYER BAR	59	2
		39	40	CONVEYER REFR	60	CONVEYER REFR	60	2	CONVEYER REFR	60	CONVEYER BAR	60	2
		41	42	CONVEYER REFR	61	CONVEYER REFR	61	2	CONVEYER REFR	61	CONVEYER BAR	61	2
		43	44	CONVEYER REFR	62	CONVEYER REFR	62	2	CONVEYER REFR	62	CONVEYER BAR	62	2
		45	46	CONVEYER REFR	63	CONVEYER REFR	63	2	CONVEYER REFR	63	CONVEYER BAR	63	2
		47	48	CONVEYER REFR	64	CONVEYER REFR	64	2	CONVEYER REFR	64	CONVEYER BAR	64	2
		49	50	CONVEYER REFR	65	CONVEYER REFR	65	2	CONVEYER REFR	65	CONVEYER BAR	65	2
		51	52	CONVEYER REFR	66	CONVEYER REFR	66	2	CONVEYER REFR	66	CONVEYER BAR	66	2
		53	54	CONVEYER REFR	67	CONVEYER REFR	67	2	CONVEYER REFR	67	CONVEYER BAR	67	2
		55	56	CONVEYER REFR	68	CONVEYER REFR	68	2	CONVEYER REFR	68	CONVEYER BAR	68	2
		57	58	CONVEYER REFR	69	CONVEYER REFR	69	2	CONVEYER REFR	69	CONVEYER BAR	69	2
		59	60	CONVEYER REFR	70	CONVEYER REFR	70	2	CONVEYER REFR	70			